

VIPER Quick Install Guide



Please read instruction guide thoroughly. Failure to do so could result in damage to tag!

Step 1 Placement

Locate spot and use painter's tape to hold tag in place temporarily on windshield

If installing on windshield, please note that Viper tags are designed for interior use only and should be placed on the **INSIDE** of windshield.



Windshield



* **REMEMBER** because vehicle makes and model sizes vary, placement will vary from vehicle to vehicle



Step 2 Test Your Tag

Now it is time to test your tag position. If the signal is not being received, then you may need to reposition your tag.



reader is mounted on the left, then place tag on the left



Step 3 Cleaning surface

Clean surface per recommended auto manufactures specifications,.

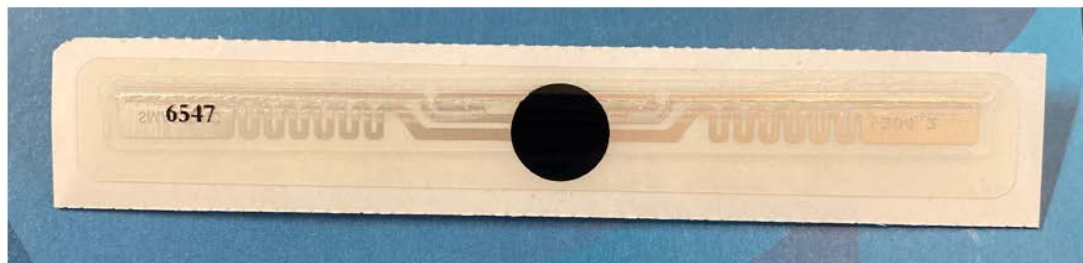
If installing on windshield, clean on the **INSIDE** of windshield.



Step 4 Install Tag

Remove tape and remove backing and place tag carefully on windshield

Make sure there are no air bubbles between the tag and the surface.



ALL STICKERS MUST BE PLACED ON THE TOP LEFT HAND CORNER OF THE WINDSHIELD ONLY - WITH NUMBERS FACING UP.



Congratulations!

You have successfully Installed your TRES Viper Tag!

For More Information, Visit Us @ www.tresrfsolutions.com
or call us at 888-574-8737

tres